



T R O J A N G R O U P

TROTROF 280 SPECIFICATIONS

TroTrof 280 is the cable troughing system designed for the Canadian rail network

PRODUCT INFORMATION

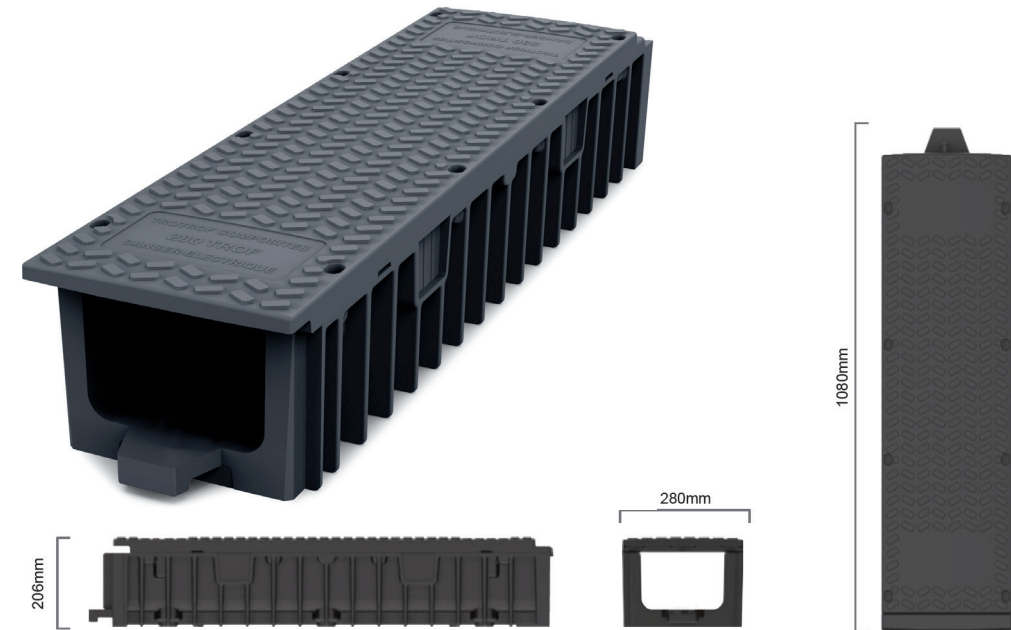
Weight	10.9kg
External dimensions	206H, 280W, 1080L
Internal dimensions	121H, 193W, 1000L
Material	Recycled high density polyethylene
Fire retardant characteristics	Meets NFPA requirements for rail in non-enclosed environment
Manufacturing process	Injection molded
Bend / Tilt characteristics	Designed into the product for ease of install

PRODUCT BENEFITS

Lightweight	Higher installation rates / lower installation costs
Material handling	Reduced site & HiRail handling
Strength	Durable and long-lasting in the rail environment
Security	Anti-vandal and anti-theft features
Quality	ISO 9001 Injection molding process
Environmentally friendly	Recycled polymer material / off-cut recovery scheme
Product interfaces	Interfaces with other Trotrof products as well as existing concrete trough products

HEALTH, SAFETY & ENVIRONMENT COMPARISON

TROTROF 280	CONCRETE TROUGH
One person lift	Four person lift
Cut using standard tools	Cut with a concrete saw
No dust or noise produced	Dust and noise produced
Smooth surface finish	Abrasive surface finish
Medium carbon footprint	High carbon footprint
Recyclable	Cannot be recycled



MADE IN CANADA



SUSTAINABLE



LIGHTWEIGHT



ROBUST



ADAPTABLE

T R O T R O F

P I O N E E R S L E A D , O T H E R S F O L L O W