



T R O J A N G R O U P

TROPATH SPECIFICATIONS

Winner of the National Recycling Awards - Best Recycled Product 2017

PRODUCT INFORMATION

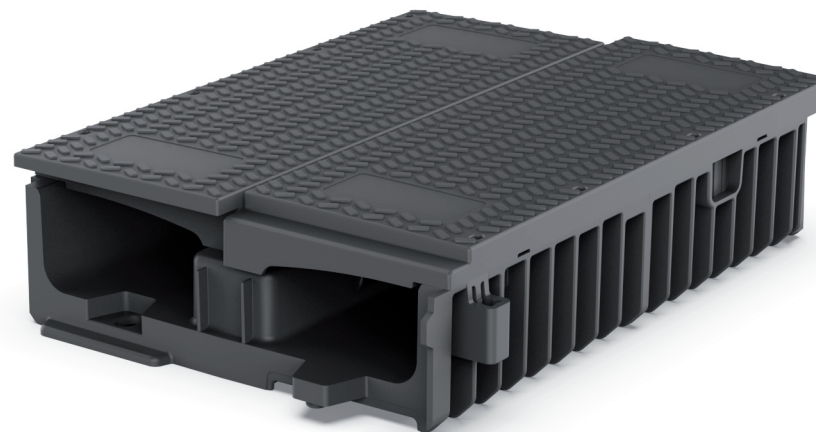
Weight	36 kgs (Base 20 kgs, Lid - 16kgs)
External dimensions	H 210mm, L 1000mm, W 700mm
Internal dimensions	H 180mm, L 1000mm, W 688mm
Material	Recycled Polymer
Fire retardant characteristics	Self-extinguishing
Manufacturing process	Injection moulding for guaranteed quality
Bend / Tilt characteristics	Designed into the product for ease of install

PRODUCT BENEFITS

Lightweight	Higher installation rates / lower installation costs
Material handling	Reduced RRV requirement
Strength	Tested to withstand site traffic with lid reinforced with Durbar plate
Security	Anti-vandal and anti-theft features
Quality	ISO 9001 Injection moulding process
Environmentally friendly	Recycled polymer material / off-cut recovery scheme
Product interfaces	Transitions, bends and T's are available in standard industry dimensions and bespoke fabrication where required

HEALTH & SAFETY COMPARISON

TROPATH	CONCRETE TROUGH
Two men lift	No equivalent product
Cut using standard tools	
No dust or noise produced	
Smooth surface finish	
Light carbon footprint	
Recyclable	



Trackwork



MADE IN BRITAIN



SUSTAINABLE



LIGHTWEIGHT



ROBUST



ADAPTABLE

T R O T R O F

PIONEERS LEAD, OTHERS FOLLOW